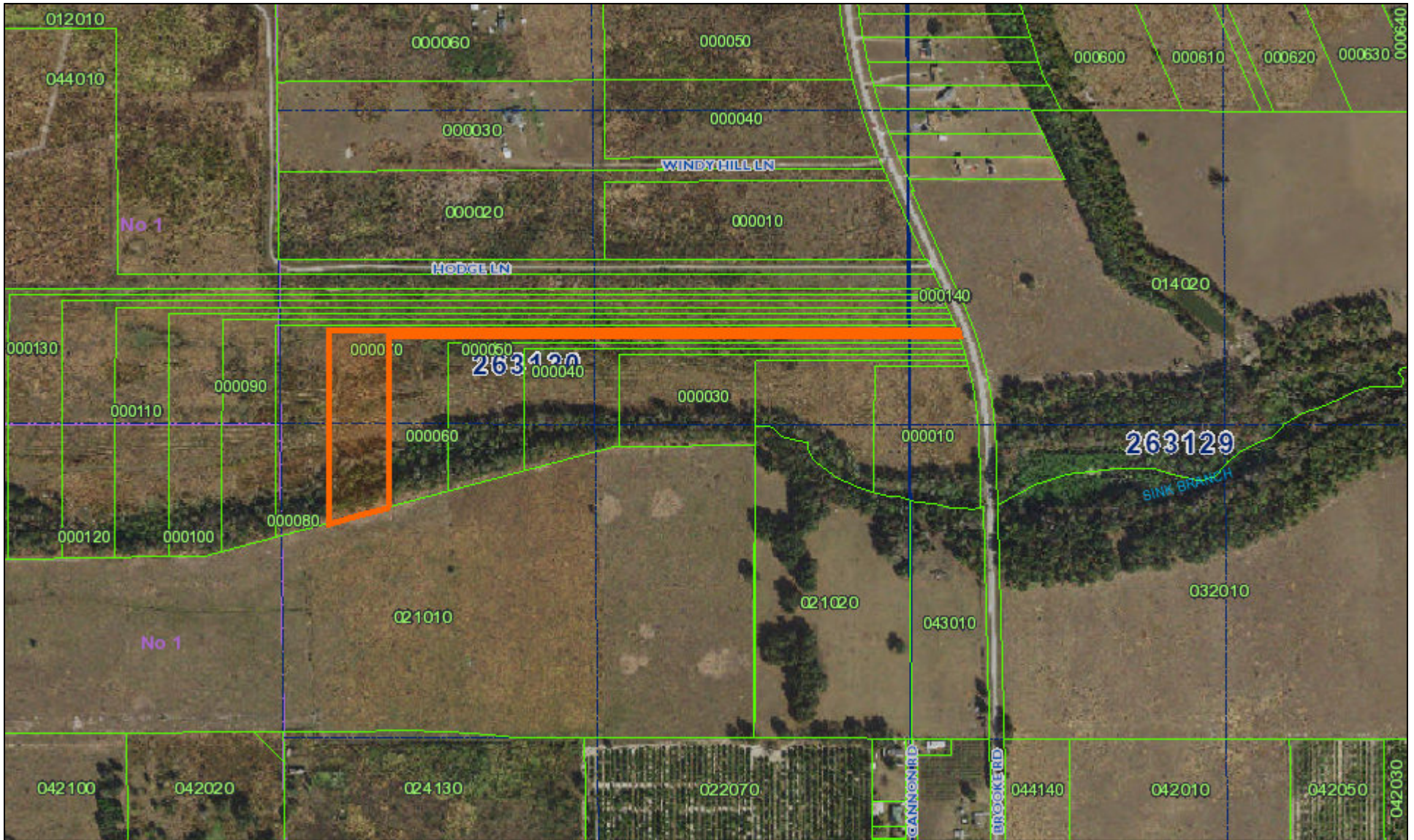


Lot 7 Aerial Pool Branch Ranch



- █ Selected Parcel
- █ Major Roads
- █ Interstate 4
- █ Polk Parkway
- █ Highways
- Roads
- Waterbodies
- Municipal Boundaries
- Lot and Block Text
- Dimensions_ParcelFabric
- Railroads
- Parcels
- Gov't Lots
- Surrounding Counties
- PLSS Townships
- PLSS Sections
- PLSS Boundaries

0 310 620 1,240 Feet

All maps are worksheets used for illustrative purposes only, they are not surveys. The Polk County Property Appraiser assumes no responsibility for errors in the information and does not guarantee the data is free from error or inaccuracy. The information is provided "as is".



Marsha M. Faux, CFA, ASA
 Property Appraiser
 Polk County, Florida
 April 7, 2020

