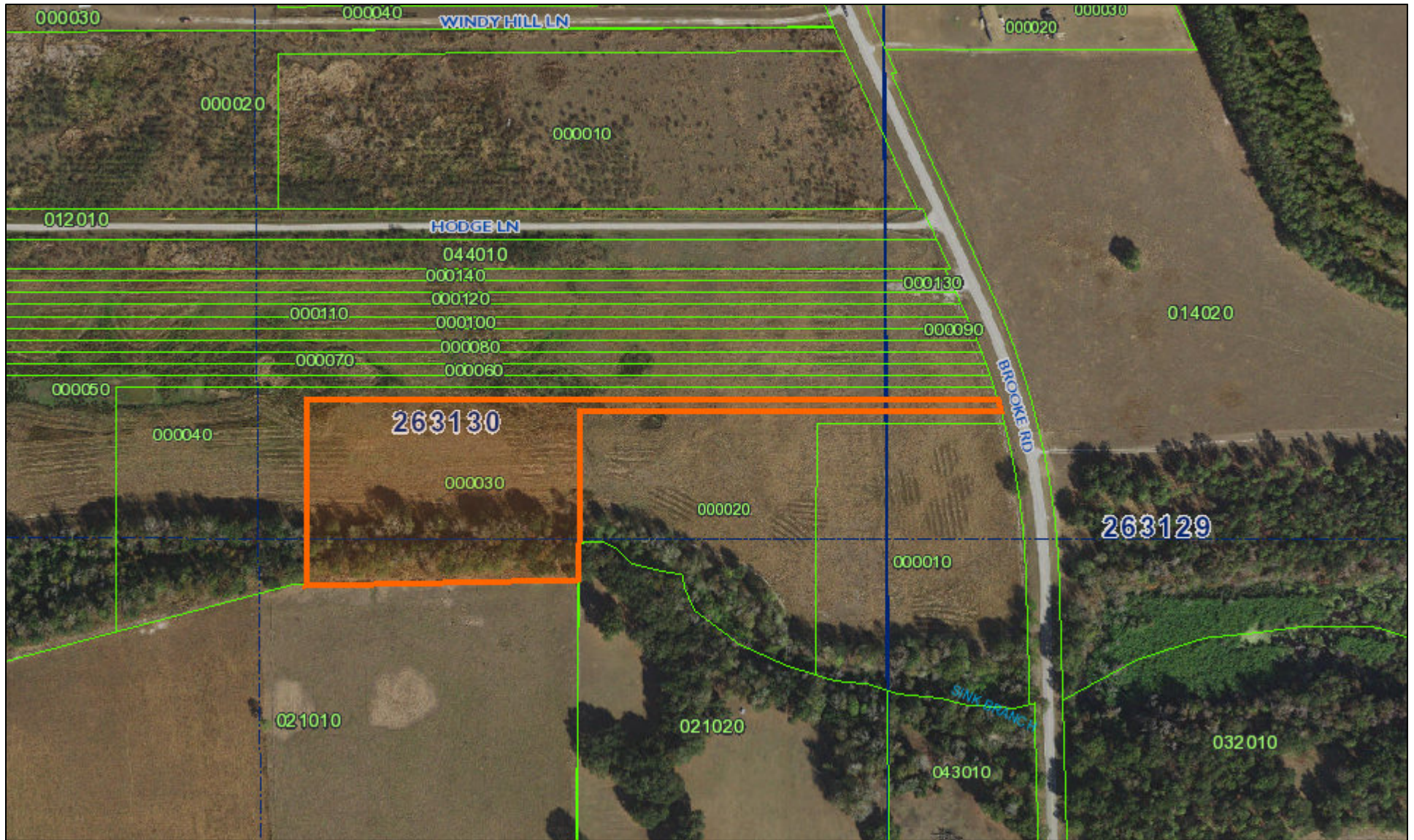
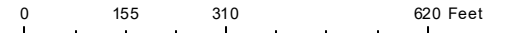


Aerial Lot 3 Pool Branch Ranch



- Selected Parcel
- Dimensions_ParcelFabric
- PLSS Sections
- Roads
- Railroads
- PLSS Boundaries
- Waterbodies
- Parcels
- Gov't Lots
- Municipal Boundaries
- Surrounding Counties
- Lot and Block Text
- PLSS Townships



All maps are worksheets used for illustrative purposes only, they are not surveys. The Polk County Property Appraiser assumes no responsibility for errors in the information and does not guarantee the data is free from error or inaccuracy. The information is provided "as is".



Marsha M. Faux, CFA, ASA
 Property Appraiser
 Polk County, Florida
 April 7, 2020

