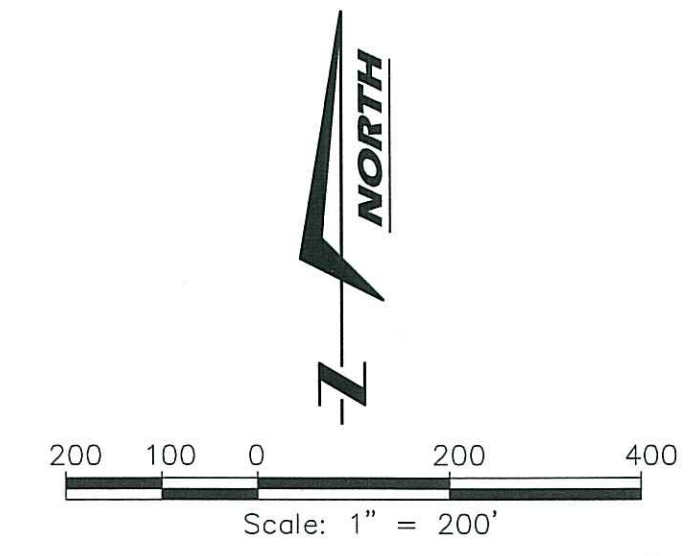
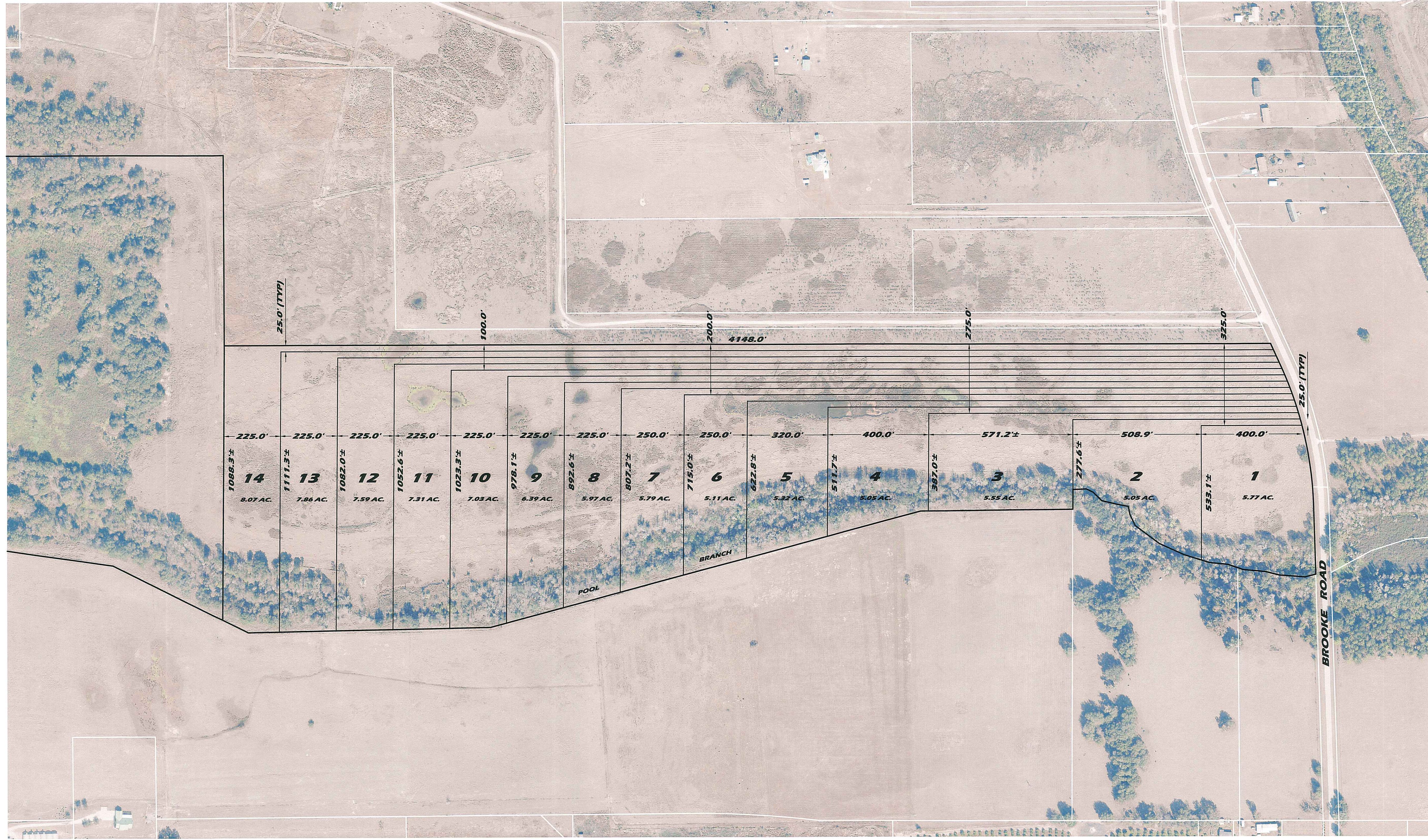


O:\HARPER - POOL BRANCH RANCH\HARPER-POOL BRANCH RANCH.dwg 4/21/2018 7:57 AM CIVIL



FIELD BOOK:

LEGEND

<p>SIR = SET 5/8" IRON ROD AND CAP "L87454"</p> <p>SPK NAD = SET PK NAIL AND DISK "L87454"</p> <p>PK NAD = FOUND PK NAIL AND DISK "AS NOTED"</p> <p>PIP = FOUND IRON PIPE "AS NOTED"</p> <p>FR = FOUND IRON ROD "AS NOTED"</p> <p>FR = FOUND REBAR/SPRINK</p>	<p>FCM = FOUND 4"x4" CONCRETE MONUMENT "AS NOTED"</p> <p>SCM = SET 4"x4" CONCRETE MONUMENT "L87454"</p> <p>NAD = NAIL AND DISK</p> <p>PK = PARKER KALON NAIL</p> <p>E = CENTERLINE</p> <p>R/W or E.O. = RIGHT OF WAY</p> <p>CONC = CONCRETE</p> <p>NO. or # = NUMBER</p>	<p>LD = IDENTIFICATION</p> <p>EXP = EDGE OF PAVEMENT</p> <p>INV. = AIR CONDITIONING</p> <p>EM = ELECTRIC METER</p> <p>U = UTILITY</p> <p>D or Δ = CENTRAL ANGLE (DELTA)</p> <p>L = ARC LENGTH</p> <p>CH = CHORD DISTANCE</p> <p>CB = CHORD BEARING</p>	<p>NR = NOT RADIAL</p> <p>IRAD = IRON</p> <p>INV. = INVERT ELEVATION</p> <p>UT = UTILITY POLE "AS NOTED"</p> <p>OV = OVERHEAD UTILITIES</p> <p>TEB = TELEPHONE BOX/MARKER</p> <p>CONC = CONCRETE</p> <p>SI = SANITARY SEWER LINE</p>	<p>BPV = BACKFLOW PREVENTER VALVE</p> <p>ET = ELECTRIC TRANSFORMER</p> <p>EX = EXISTING ELEVATIONS</p> <p>SM = STORM MANHOLE</p> <p>SSMH = SANITARY SEWER MANHOLE</p> <p>CT = CABLE TELEVISION BOX</p>	<p>ME = MITERED END SECTION</p> <p>MLP = METAL LIGHT POLE</p> <p>CLP = CONCRETE LIGHT POLE</p> <p>CP = CONCRETE POWER POLE</p> <p>WPP = WOOD POWER POLE</p> <p>MLP = WOOD LIGHT POLE</p> <p>FRM = FLOOD INSURANCE RATE MAP</p> <p>FEMA = FEDERAL EMERGENCY MANAGEMENT AGENCY</p> <p>SFWMD = SOUTHWEST FLORIDA WATER MANAGEMENT DISTRICT</p>	<p>RCP = REINFORCED CONCRETE PIPE</p> <p>CMP = CORRUGATED METAL PIPE</p> <p>W = WATER WELL</p> <p>MW = MONITOR WELL</p> <p>CL = CLEWNOT</p> <p>WV = WATER VALVE</p> <p>FX = FIRE HYDRANT</p>	<p>± = MORE OR LESS / PLUS OR MINUS</p> <p>NAD 83 = NATIONAL GEODETIC VERTICAL DATUM OF 1983</p> <p>NAD 83 = NORTH AMERICAN VERTICAL DATUM OF 1983</p> <p>ALTA = AMERICAN LAND TITLE ASSOCIATION</p> <p>ACSM = AMERICAN CONGRESS OF SURVEYING AND MAPPING</p> <p>D.R. = OFFICIAL RECORDS</p> <p>BOC = BACK OF CURB</p> <p>CEL = BOLLARD</p>	<p>PC/PSS = PAGE/PAGES</p> <p>± = AND</p> <p>INLET = INLET</p> <p>SPRINKLER = SPRINKLER</p> <p>MAIL BOX = MAIL BOX</p> <p>GAS VALVE = GAS VALVE</p> <p>IRIGATION VALVE = IRRIGATION VALVE</p> <p>A.C. UNIT = A.C. UNIT</p>	<p>CONCRETE = CONCRETE</p> <p>ASPHALT = ASPHALT</p> <p>MAIL BOX = MAIL BOX</p> <p>GAS VALVE = GAS VALVE</p> <p>IRRIGATION VALVE = IRRIGATION VALVE</p> <p>A.C. UNIT = A.C. UNIT</p>	<p>AIR RELEASE VALVE = AIR RELEASE VALVE</p> <p>BENCHMARK = BENCHMARK</p> <p>ELECTRIC BOX = ELECTRIC BOX</p> <p>GAS LINE MARKER = GAS LINE MARKER</p> <p>CURB INLET = CURB INLET</p> <p>CITY ANCHOR = CITY ANCHOR</p> <p>GAS METER = GAS METER</p> <p>SEWER VALVE = SEWER VALVE</p> <p>SATELLITE DISH = SATELLITE DISH</p> <p>WATER METER = WATER METER</p> <p>CLUMP INLET = CLUMP INLET</p> <p>CITY ANCHOR = CITY ANCHOR</p> <p>NATURAL GROUND = NATURAL GROUND</p>
---	--	--	--	--	---	--	---	--	---	--

NOTE: THIS SURVEY, AS DEPICTED IN ITS GRAPHIC FORM, IS A PRELIMINARY LAYOUT OF THE SURVEYED LANDS AND WILL IN NO CIRCUMSTANCES BE AUTHORITY BY ANY OTHER FORM OF THIS SURVEY.

DRAWN BY: KWT

CHECKED BY: KWT

VERTICAL CONTROL NOTE: VERTICAL CONTROL BASED ON A LEVEL LOOP MEETING ACCURACY REQUIREMENTS OF THE FLORIDA SURVEYING BOARD, 2017 (11/15/17), FLORIDA SURVEYING BOARD ADMINISTRATIVE CODE.

HORIZONTAL CONTROL NOTE: HORIZONTAL CONTROL BASED ON A CLOSED TRAVERSE, ERROR OF CLOSURE FOR TRAVERSE ONE (1) FOOT IN 10000 FEET (MINIMUM).

NOT VALID WITHOUT THE SIGNATURE AND THE ORIGINAL RAISED SEAL OF A FLORIDA LICENSED SURVEYOR AND MAPPER

04/27/2015 FIELD DATE

KENNETH W. THOMPSON PSM #4080

PRELIMINARY LAYOUT

**HARPER PROPERTIES
POOL BRANCH RANCH
POLK COUNTY, FLORIDA**

PSM PLATINUM
SURVEYING & MAPPING

6700 South Florida Avenue, Suite 6, Lakeland, Florida 33813
(882) 940-4699 • Fax: (882) 680-1434
ST. AUGUSTINE, FLORIDA