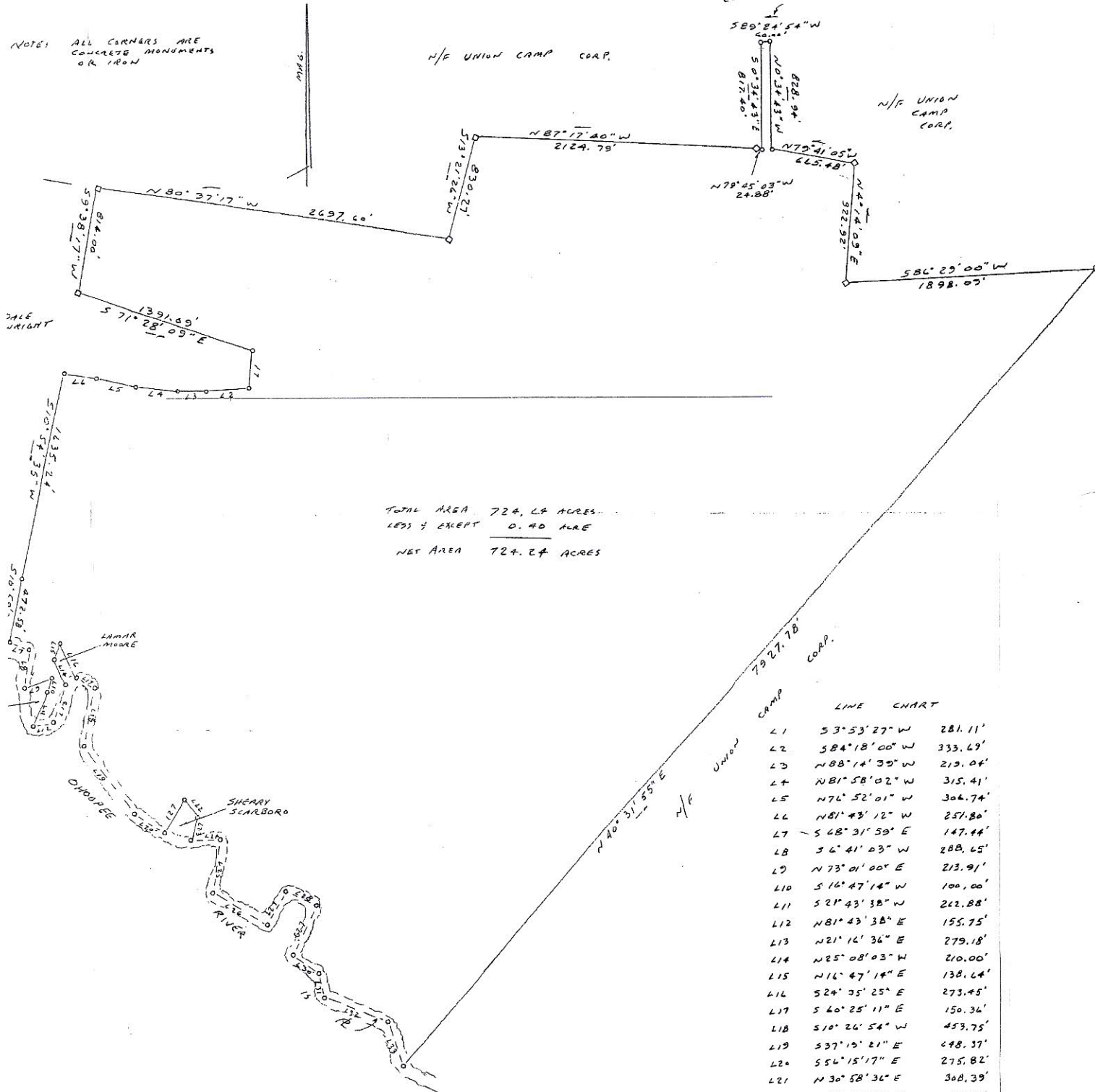


NOTE: ALL CORNERS ARE CONCRETE MONUMENTS OR IRON

N/F UNION CAMP CORP.

N/F UNION CAMP CORP.

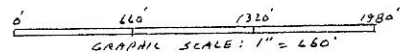


TOTAL AREA 724.44 ACRES
 LESS 4 EXCEPT 0.40 ACRE
 NET AREA 724.04 ACRES

LINE CHART		
L1	S 3° 53' 27" W	281.11'
L2	S 84° 18' 00" W	333.49'
L3	N 88° 14' 39" W	219.04'
L4	N 81° 58' 02" W	315.41'
L5	N 76° 52' 01" W	306.74'
L6	N 81° 43' 12" W	251.80'
L7	S 68° 31' 59" E	147.44'
L8	S 6° 41' 03" W	288.45'
L9	N 73° 01' 00" E	213.91'
L10	S 16° 47' 14" W	100.00'
L11	S 21° 43' 38" W	262.88'
L12	N 81° 43' 38" E	155.75'
L13	N 21° 16' 36" E	279.18'
L14	N 25° 08' 03" W	210.00'
L15	N 16° 47' 14" E	138.44'
L16	S 24° 35' 25" E	273.45'
L17	S 40° 28' 11" E	150.36'
L18	S 10° 26' 54" W	453.75'
L19	S 37° 19' 21" E	448.37'
L20	S 56° 15' 17" E	275.82'
L21	N 30° 58' 36" E	308.39'
L22	S 37° 24' 54" E	178.47'
L23	S 16° 52' 51" W	183.70'
L24	N 88° 15' 02" E	220.52'
L25	S 8° 10' 23" W	398.75'
L26	S 58° 30' 10" E	479.40'
L27	N 28° 55' 10" E	271.13'
L28	S 64° 11' 47" E	250.14'
L29	S 23° 56' 50" W	402.12'
L30	S 56° 20' 26" E	270.53'
L31	S 12° 55' 23" E	175.00'
L32	S 69° 10' 10" E	513.35'
L33	S 21° 39' 03" E	364.20'

CLOSURE PRECISION OF FIELD DATA IS ONE FOOT IN 15,000 FEET. ANGULAR PRECISION OF 07" PER POINT. BEAT CALCULATED TO BE ACCURATE 1" = 40,000

THIS PLAT SUBJECT TO ALL RECORDED EASEMENTS & RESTRICTIONS AND IS VALID ONLY FOR THE PERSON NAMED IN THE TITLE.



EQUIPMENT: 6" TOPCON & HP COMPUTER



SURVEY FOR:
 JOE L. SAUNDERS
 724.44 ACRE TRACT OF LAND IN THE
 58 G.M. D.
 EMANUEL COUNTY, GEORGIA
 9-27-05