

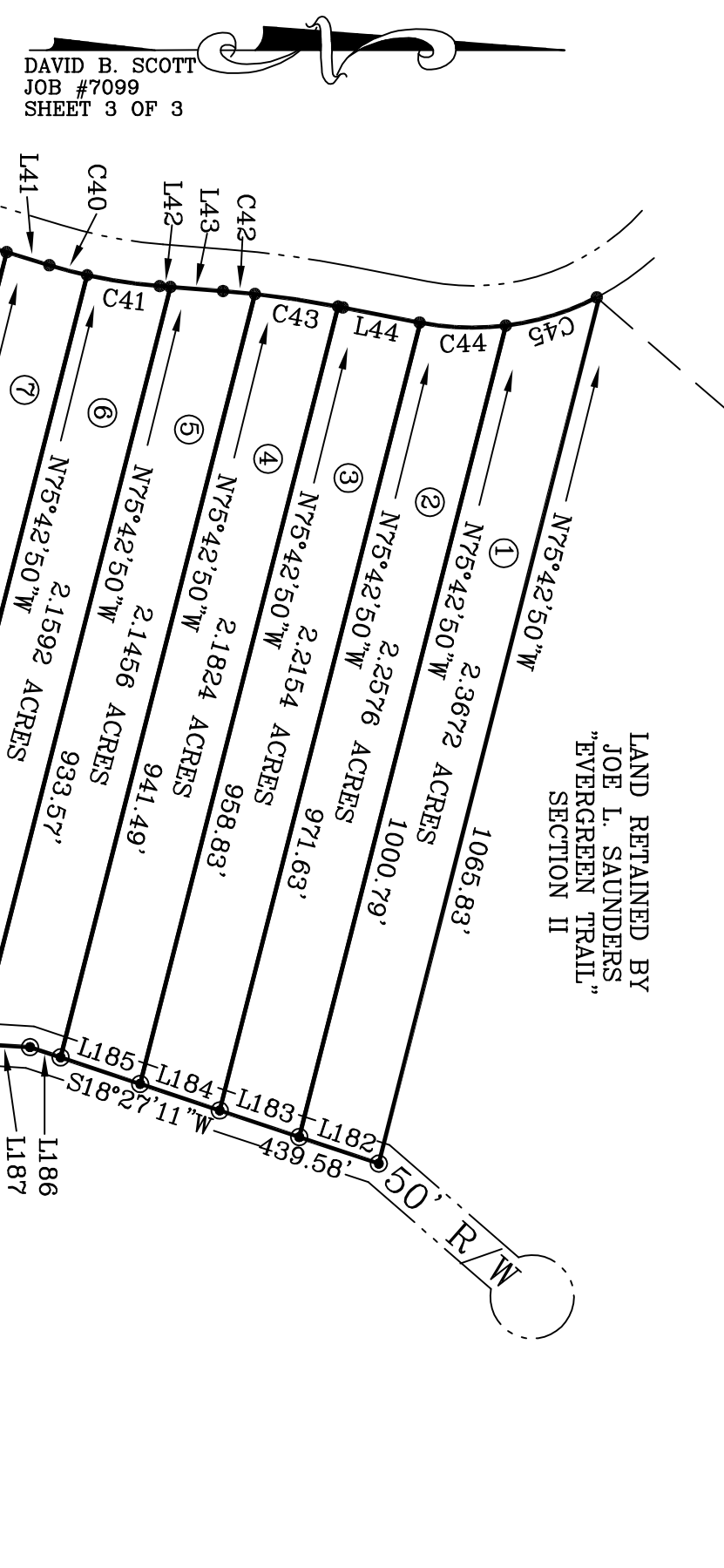
LINE	DIRECTION	DISTANCE	LINE	DIRECTION	DISTANCE	LINE	DIRECTION	DISTANCE
L1	S62°03'58"W	114.78'	L27	N64°31'31"W	20.01'	L54	N05°35'34"E	150.33'
L2	S62°03'58"W	24.84'	L28	N64°31'31"W	20.01'	L55	N89°24'56"E	128.19'
L3	S64°40'17"W	33.11'	L29	N64°31'31"W	19.20'	L56	S00°00'00"E	313.40'
L4	N87°50'57"W	6.06'	L30	N64°31'31"W	100.00'	L57	N89°24'56"E	303.27'
L5	N87°50'57"W	77.01'	L31	N64°31'31"W	62.72'	L58	N89°24'56"E	129.22'
L6	S77°01'32"W	49.05'	L32	N64°31'31"W	26.19'	L59	N20°49'22"E	339.28'
L7	S70°14'44"W	86.87'	L33	N64°31'31"W	75.87'	L60	N08°26'04"E	339.28'
L8	S63°37'09"W	82.39'	L34	N22°15'47"W	95.39'	L61	N08°26'04"E	323.65'
L9	S73°39'29"W	82.39'	L35	N22°15'47"W	38.51'	L62	N84°49'28"E	176.08'
L10	S73°39'29"W	13.17'	L36	N41°00'07"W	43.89'	L63	S23°16'00"W	166.55'
L11	S73°39'29"W	113.19'	L37	N62°30'14"W	106.59'	L64	S86°24'00"W	172.53'
L12	S73°39'29"W	22.64'	L38	N06°33'42"E	35.55'	L65	S86°24'00"W	172.53'
L13	S73°39'29"W	22.64'	L39	N16°58'32"E	73.50'	L66	S86°24'00"W	172.53'
L14	S73°39'29"W	17.36'	L40	N16°58'32"E	53.42'	L67	S86°24'00"W	172.53'
L15	S81°47'23"W	57.39'	L41	N16°58'32"E	53.42'	L68	S86°24'00"W	168.95'
L16	S81°47'23"W	21.28'	L42	N04°25'59"E	12.93'	L69	S86°24'00"W	78.69'
L17	S81°47'23"W	21.28'	L43	N04°25'59"E	63.54'	L70	S86°24'00"W	139.40'
L18	S81°47'23"W	128.12'	L44	N11°08'34"E	93.54'	L71	S19°20'42"W	111.06'
L19	S81°47'23"W	21.40'	L45	S02°44'08"E	234.11'	L72	S02°44'08"E	89.40'
L20	N64°31'31"W	34.56'	L46	S02°44'08"E	331.39'	L73	S19°20'42"W	20.58'
L21	N64°31'31"W	20.01'	L47	N05°00'48"W	170.03'	L74	S32°55'14"W	30.93'
L22	N64°31'31"W	20.01'	L48	N05°00'48"W	280.28'	L75	S67°46'44"W	54.03'
L23	N64°31'31"W	20.01'	L49	N83°24'59"E	129.07'	L76	S38°46'19"W	67.93'
L24	N64°31'31"W	20.01'	L50	S01°56'00"E	297.43'	L77	S43°36'23"E	67.92'
L25	N64°31'31"W	20.01'	L51	N89°24'56"E	116.13'	L78	S08°39'14"W	113.42'
L26	N64°31'31"W	20.01'	L52	S00°00'00"E	310.78'	L79	N40°41'20"E	103.12'
			L53	S00°00'00"E	371.27'	L80	N40°41'20"E	133.90'
						L107	S18°28'05"W	256.63'

CURVE	RADIUS	LENGTH	TANGENT	CHORD	BEARING	DELTA
C1	421.08'	24.33'	12.17'	24.33'	N63°43'17"E	03°18'40"
C2	421.08'	109.78'	55.20'	109.47'	N82°50'45"E	14°56'15"
C3	421.08'	32.02'	16.02'	32.02'	N82°29'35"E	04°21'27"
C4	1393.57'	40.06'	20.03'	40.06'	N85°29'42"E	01°38'50"
C5	1393.57'	20.03'	10.02'	20.03'	N85°29'42"E	00°49'25"
C6	1393.57'	20.02'	10.01'	20.02'	N87°33'13"E	00°49'23"
C7	1393.57'	48.26'	24.14'	48.26'	N89°58'51"E	04°04'02"
C8	600.27'	20.02'	10.01'	20.02'	S86°28'11"W	01°54'40"
C9	600.27'	20.02'	10.01'	20.02'	S84°33'23"W	01°54'40"
C10	600.27'	68.89'	34.48'	68.88'	S80°18'47"W	06°34'31"
C11	1409.58'	154.00'	77.00'	153.93'	S76°53'45"W	06°15'35"
C12	1409.58'	10.75'	5.38'	10.75'	S70°32'50"W	00°26'12"
C13	1409.58'	115.05'	57.57'	115.01'	S87°42'38"W	05°14'12"
C14	1258.92'	32.37'	16.19'	32.37'	S84°21'21"W	01°30'38"
C15	1258.92'	170.81'	86.60'	170.81'	N68°22'28"E	09°30'38"
C16	1029.02'	9.49'	4.75'	9.49'	N73°23'36"E	00°31'43"
C17	1029.02'	106.98'	53.53'	106.95'	N76°13'26"E	05°07'56"
C18	1194.33'	106.98'	53.53'	106.95'	N68°17'23"E	02°59'58"
C19	1194.33'	62.82'	31.27'	62.81'	N68°17'23"E	02°59'58"
C20	387.91'	102.30'	51.50'	102.10'	N89°21'06"E	15°07'28"
C21	387.91'	20.31'	10.16'	20.31'	S81°35'09"E	03°00'02"
C22	387.91'	20.16'	10.08'	20.15'	S78°35'49"E	02°58'37"

1, DONNIE E. WALKER, JR., LAND SURVEYOR, CERTIFY THAT THIS MAP WAS DRAWN FROM AN ACTUAL FIELD SURVEY PERFORMED UNDER MY DIRECT SUPERVISION AND THAT THE ERROR OF CLOSURE EXCEEDS 1 PART IN 10,000.

TOTAL AREA = 95.4002 ACRES

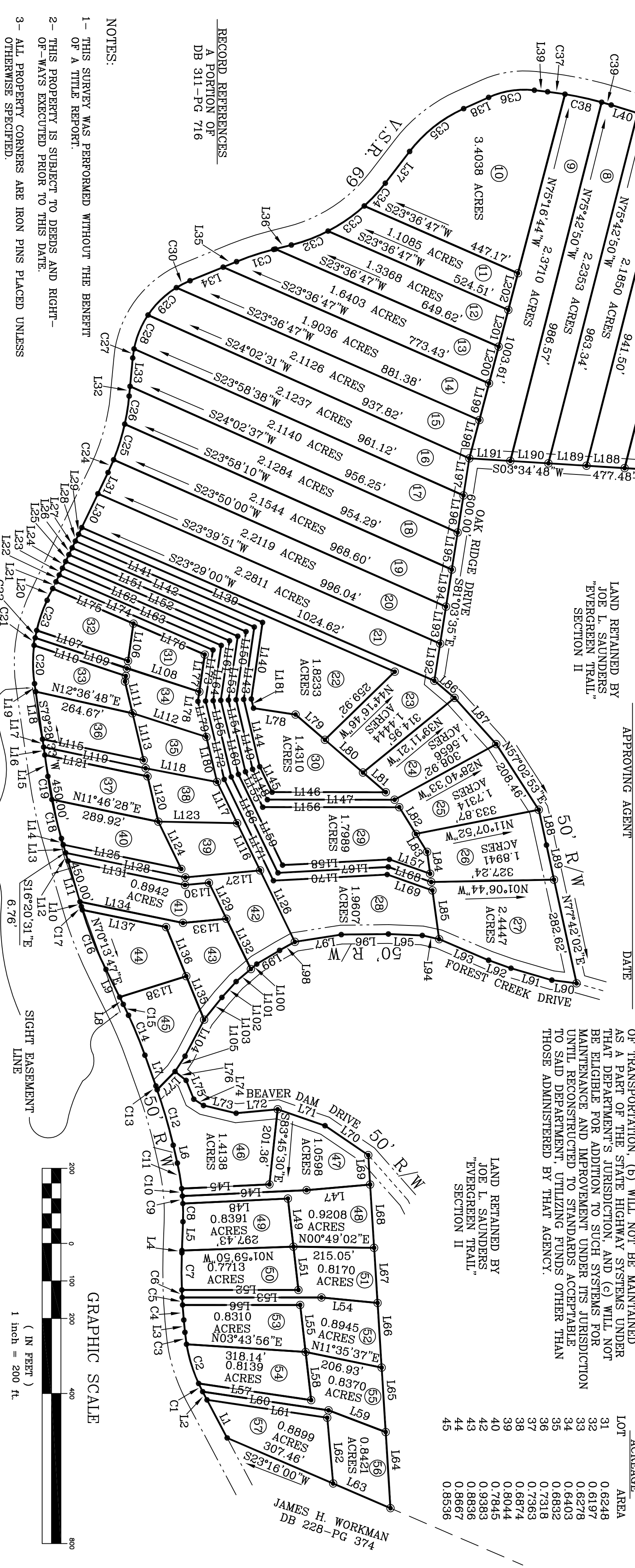
DONNIE E. WALKER, JR.
LAND SURVEYOR
No. 1576



THIS PLAT IS EXCEPTED FROM THE FULL TERMS OF THE PRESENT SUBDIVISION ORDINANCE IN THAT IT MEETS THE REQUIREMENTS SET FORTH IN SECTION 14.2(1).

APPROVING AGENT _____ DATE _____

LOT	AREA	ACREAGE
31	0.6248	31
32	0.6197	32
33	0.6278	33
34	0.6403	34
35	0.6832	35
36	0.7318	36
37	0.7363	37
38	0.6874	38
39	0.8044	39
40	0.7845	40
41	0.9383	41
42	0.8836	42
43	0.8667	43
44	0.8536	44
45	0.8536	45



NOTES:
 1- THIS SURVEY WAS PERFORMED WITHOUT THE BENEFIT OF A TITLE REPORT.
 2- THIS PROPERTY IS SUBJECT TO DEEDS AND RIGHT-OF-WAYS EXECUTED PRIOR TO THIS DATE.
 3- ALL PROPERTY CORNERS ARE IRON PINS PLACED UNLESS OTHERWISE SPECIFIED.

RECORD REFERENCES
 A PORTION OF
 DB 311-PG 716

SUBDIVISION OF
EVERGREEN TRAIL
 SECTION I
 LEAD MINES MAGISTERIAL DISTRICT WYTHE COUNTY, VIRGINIA

Survey: LDC
 Drawn: JAS
 Checked: DEW
 Scale: 1"=200'

Job. No. S991020
 Date 11/04/99
 Sight Rev. 5/19/00

DALTON-WALKER ASSOC. P.C.
 Surveyors
 119 N. MAIN ST. GALAX, VIRGINIA 24333
 (540) 236-0632 FAX (540) 236-0596